



**FREMONT ECONOMIC
DEVELOPMENT CORP**

AREA PROFILE

Welcome to Fremont County...

- Fremont County is ready to welcome new businesses and has policies in place to get your enterprise up and running quickly.
- Controlled growth through new business acquisition is the goal of every local government entity.
- The FEDC quick response team helps new businesses get started as efficiently as possible.



Friend to local industry...



Photo courtesy of Portec, Inc.



Photo courtesy of Tech-Western, Inc.



Photo courtesy of Holcim, Inc.



Photo courtesy of Quixotic Farming



Photo courtesy of Portec, Inc.



Photo courtesy of Tech-Western, Inc.

A river runs through it...

- Situated along Colorado State Highway 50 on the Arkansas River, Fremont County is centrally located for easy and efficient travel anywhere in the State.
- 100 miles from Denver, 45 miles southwest of Colorado Springs and 35 miles west of Pueblo.
- The Arkansas River extends the entire 60 mile length of Fremont County.

A great place to do business...

Arkansas
River Valley

Royal
Gorge
Region

1.6 MILLION
VISITORS EVERY YEAR IN
FREMONT COUNTY

Photo courtesy of Raft Masters

Photo courtesy of Royal Gorge Bridge and Park

www.fedc.co

Ready, willing and capable...

- Population of Fremont County is over 40,000
- 41% of the population is prime working age
 - 20 to 50 years old
 - 43.6 years old median age
- \$38,979 median income
 - Compared to \$57,685 median for Colorado



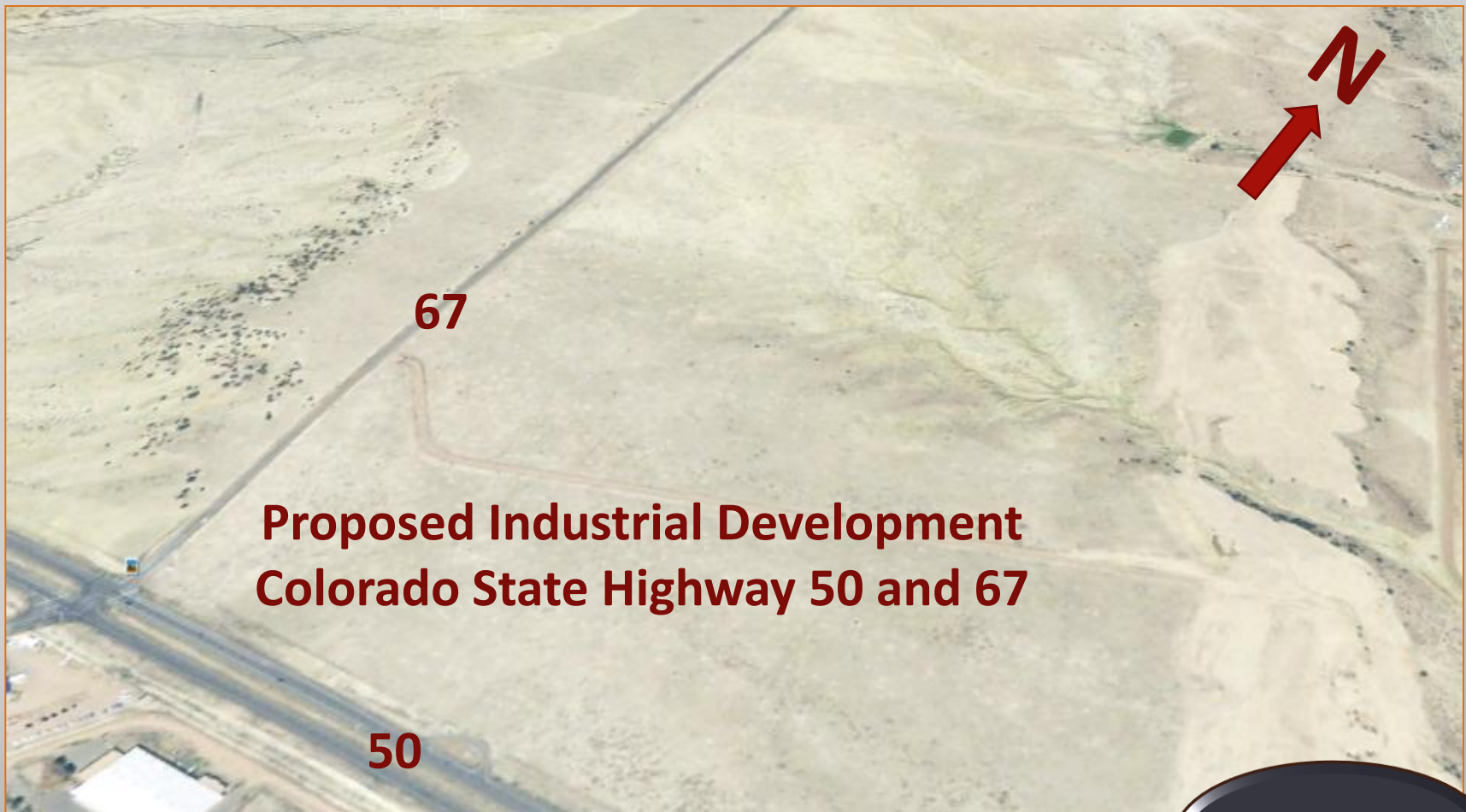
Undeveloped opportunities...



Colorado's best climate...

- Fremont County is called “*the climate capital of Colorado*” due to the pleasant year-round weather.
- A combination of unique high desert geography and 5300 foot elevation, protects the area from harsh conditions.
- The average daily high temperature in January is 14 degrees warmer in Fremont County than other Colorado counties.

Future possibilities...

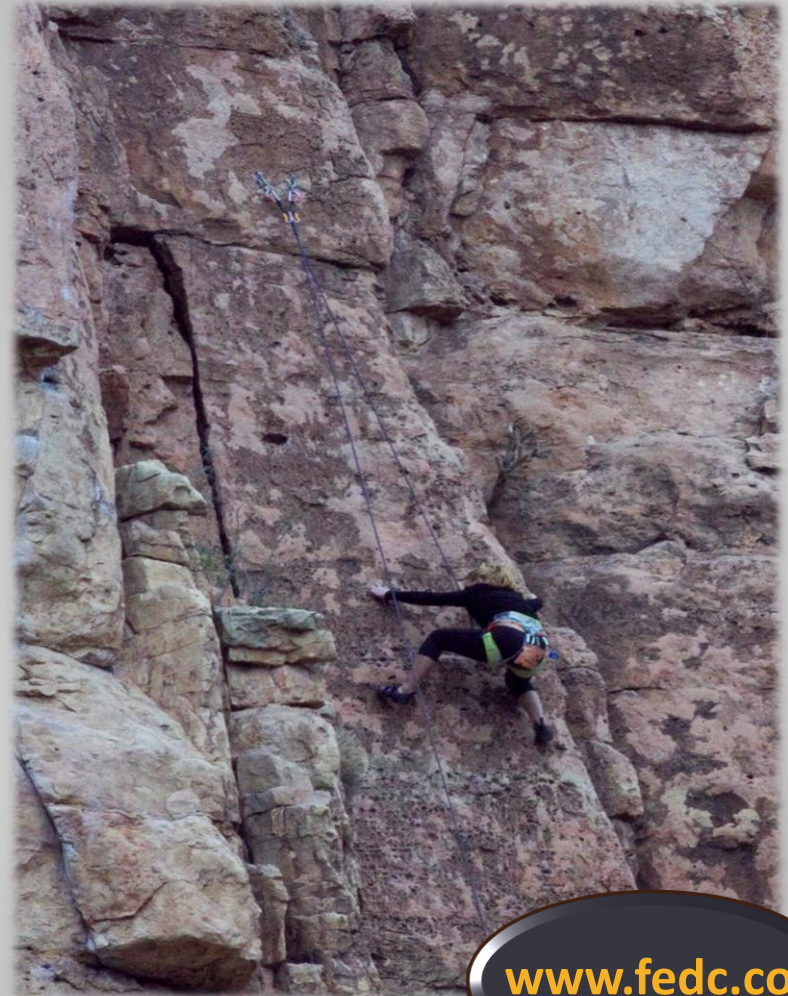


Build it like you want it...



Nobody does it – lower...

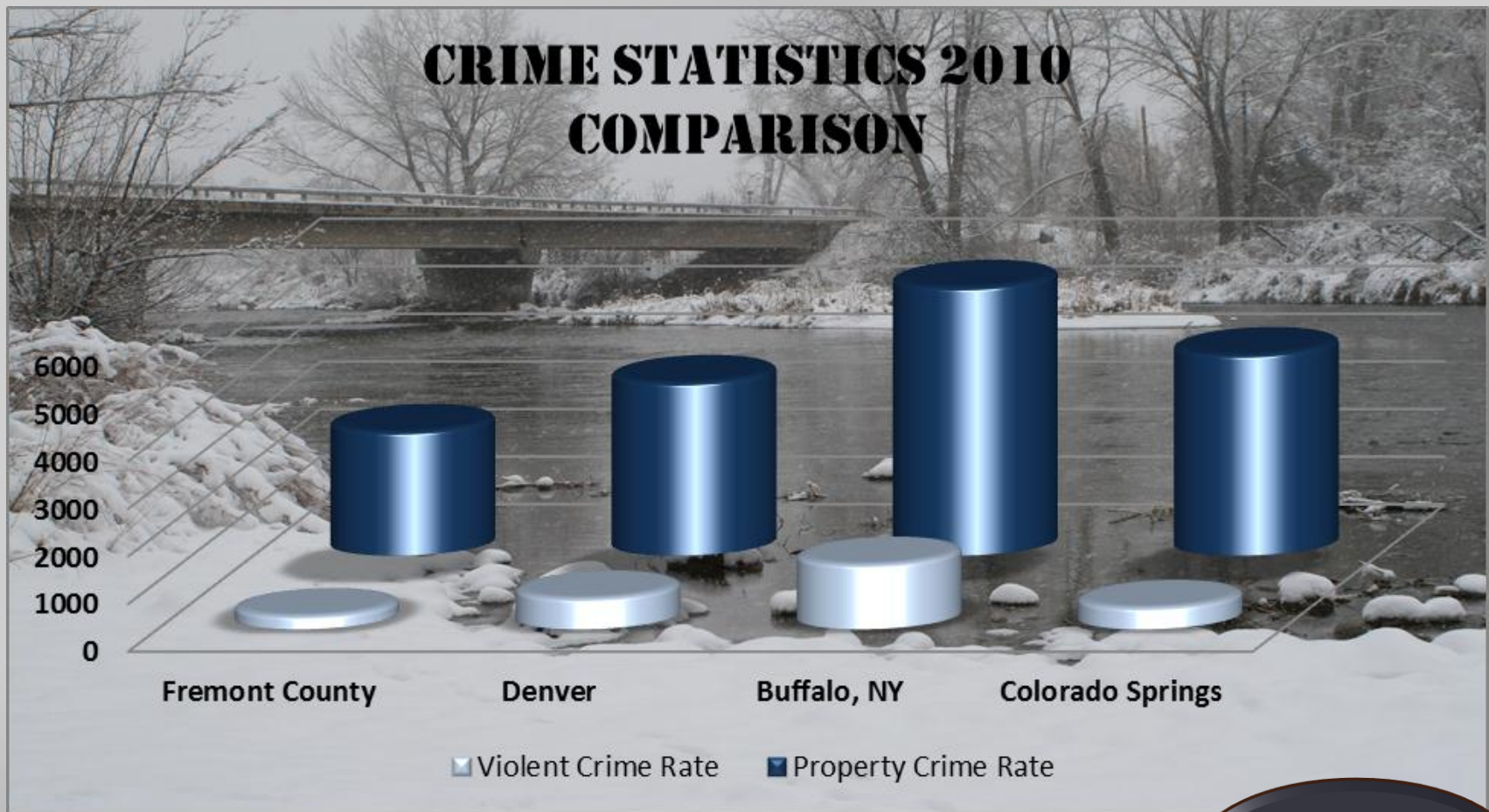
- Colorado has the lowest state sales tax percentage for states that collect sales taxes.
- Colorado charges only 2.9% state sales tax compared to California at 7.5% or New Jersey at 7.0%.
- Colorado is also in the bottom half of all states in terms of total tax burden when compared to all 50 states.
- Fremont County has one of the lowest mill levies in Colorado.



Colorado history at every turn...



Small town safety...



Family friendly...





Adventure capital of Colorado..

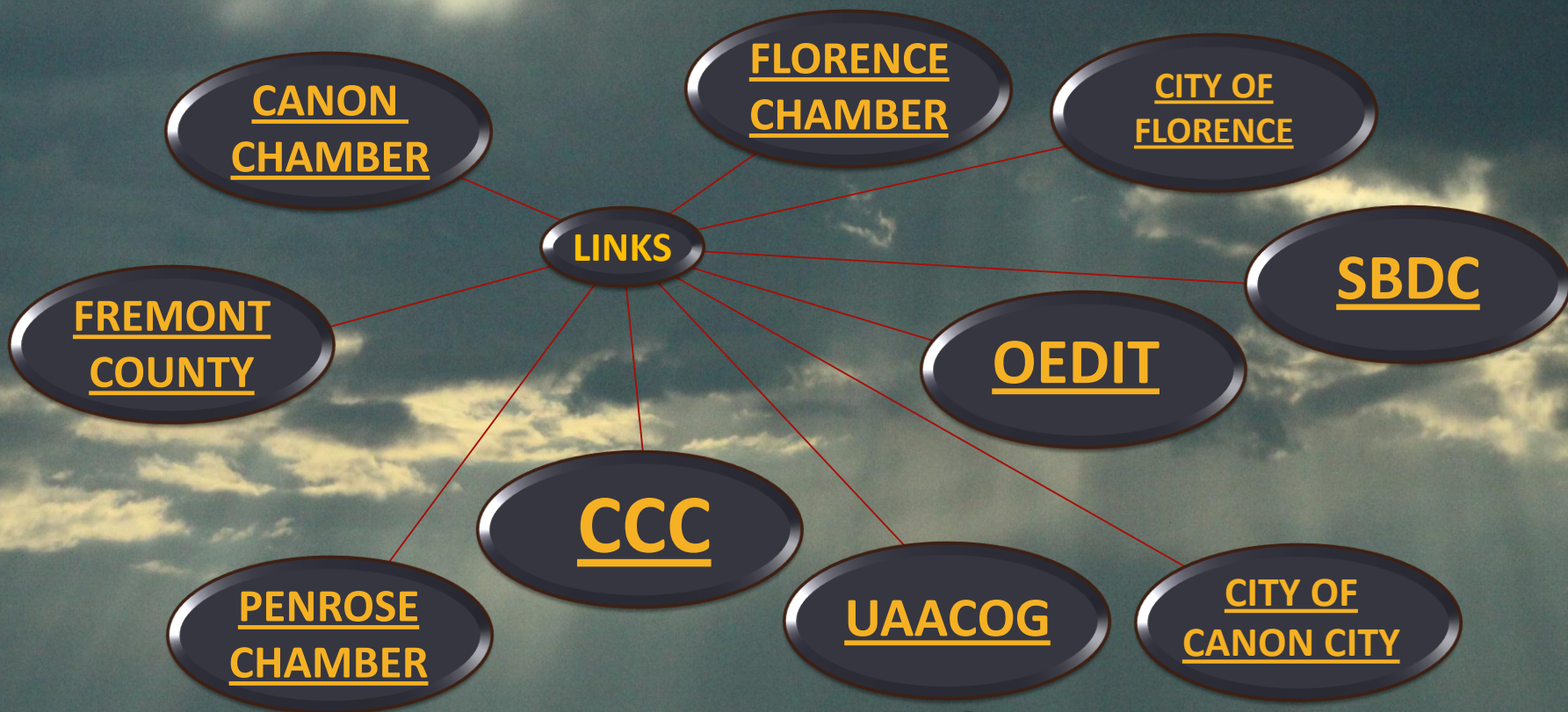
FEDC

www.fedc.co

Work where you choose to live...

- World class RECREATION**
- Hiking
 - Mountain biking
 - Rock climbing
 - Fly fishing
 - Paleontology
 - Gardening
 - Sky diving
 - Zip lines
 - Rafting
 - Horseback riding
 - Kayaking
 - Skiing
 - Motorcycling
 - Museums
 - Snow boarding
 - Hunting
 - Bird watching
 - Gambling
 - Sight seeing
 - Antiquing
 - Canoeing
 - Off roading
 - Community events
 - Flying
 - Wine tasting
 - Camping
 - Living

Community support...





Let us earn your business...

FEDC

402 Valley Road

Cañon City, CO 81212

Rob Brown

Executive Director

brown@fedc.co

303-548-1421

855-946-4223

www.fedc.co

Acknowledgements...

- Charlene Linder for providing the photos of Fremont County, Colorado.
- The Board Members of FEDC for their on-going guidance.
- The local governments, municipalities and chambers for their support.
- The Citizens of Fremont County for their spirit and enthusiasm.
- To those people that want to live where they want to play and work where they want to live.